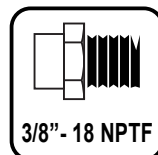
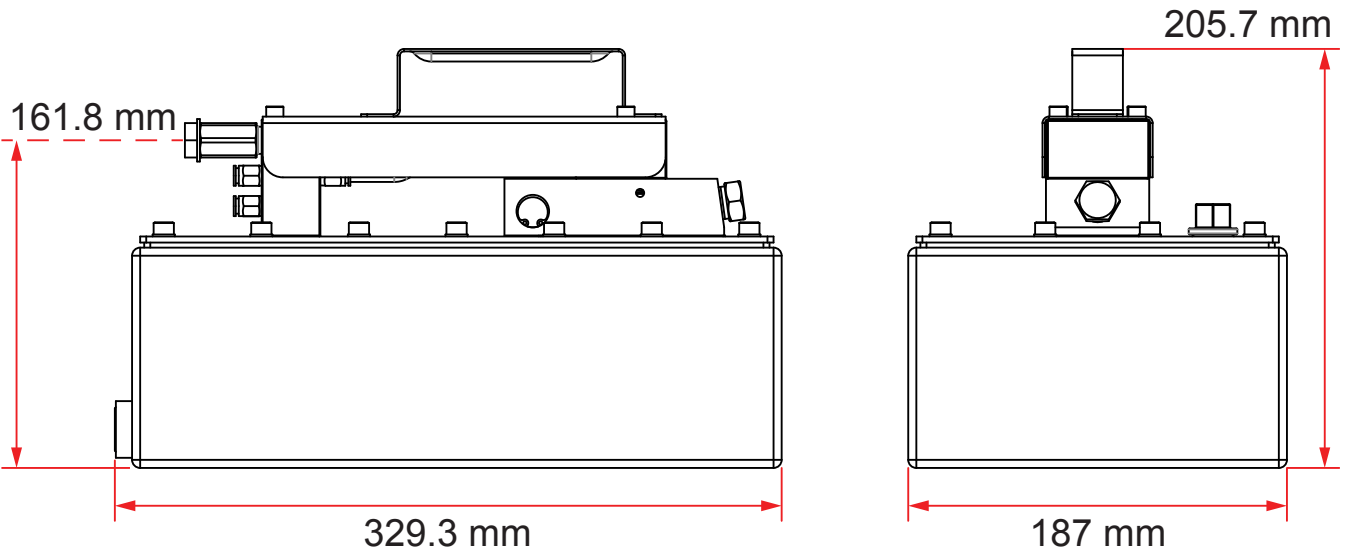
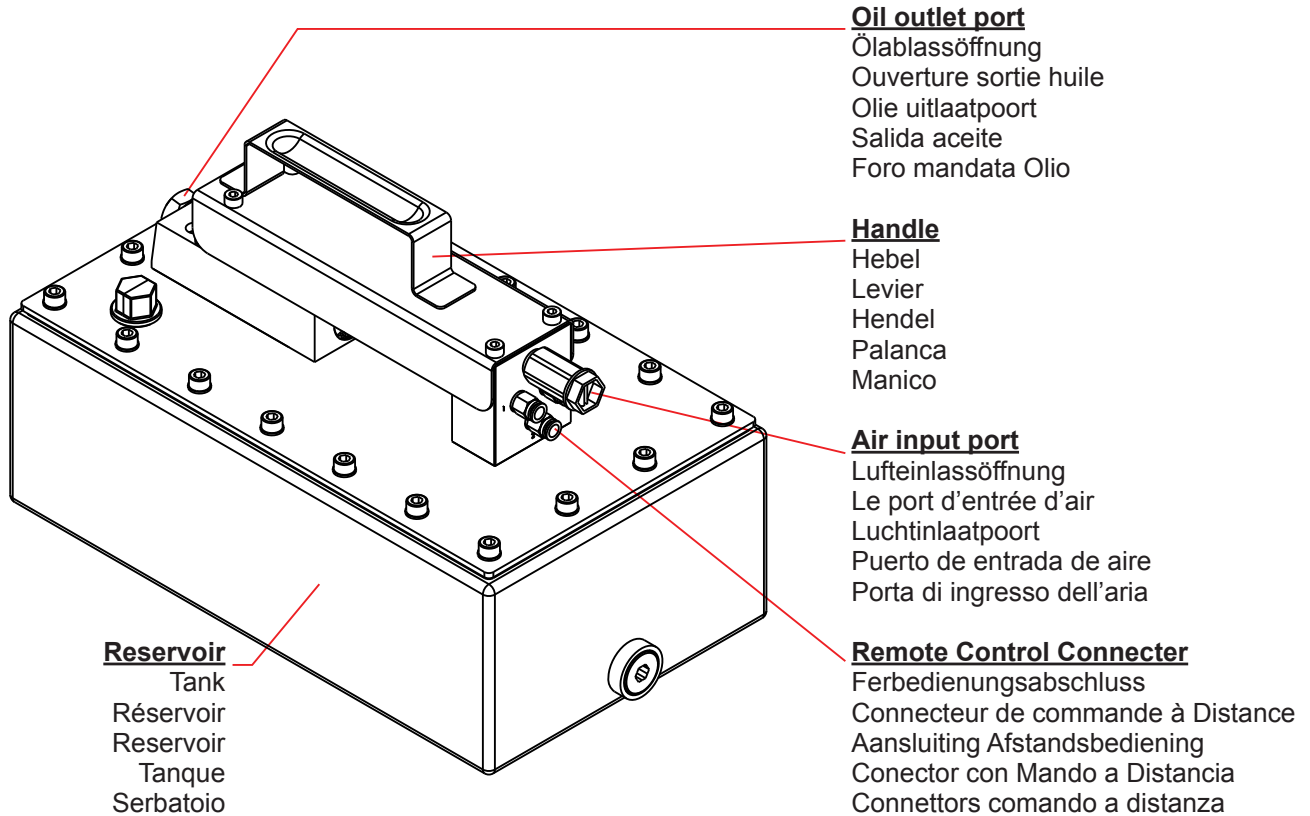




# PA3801L

A5714-2102





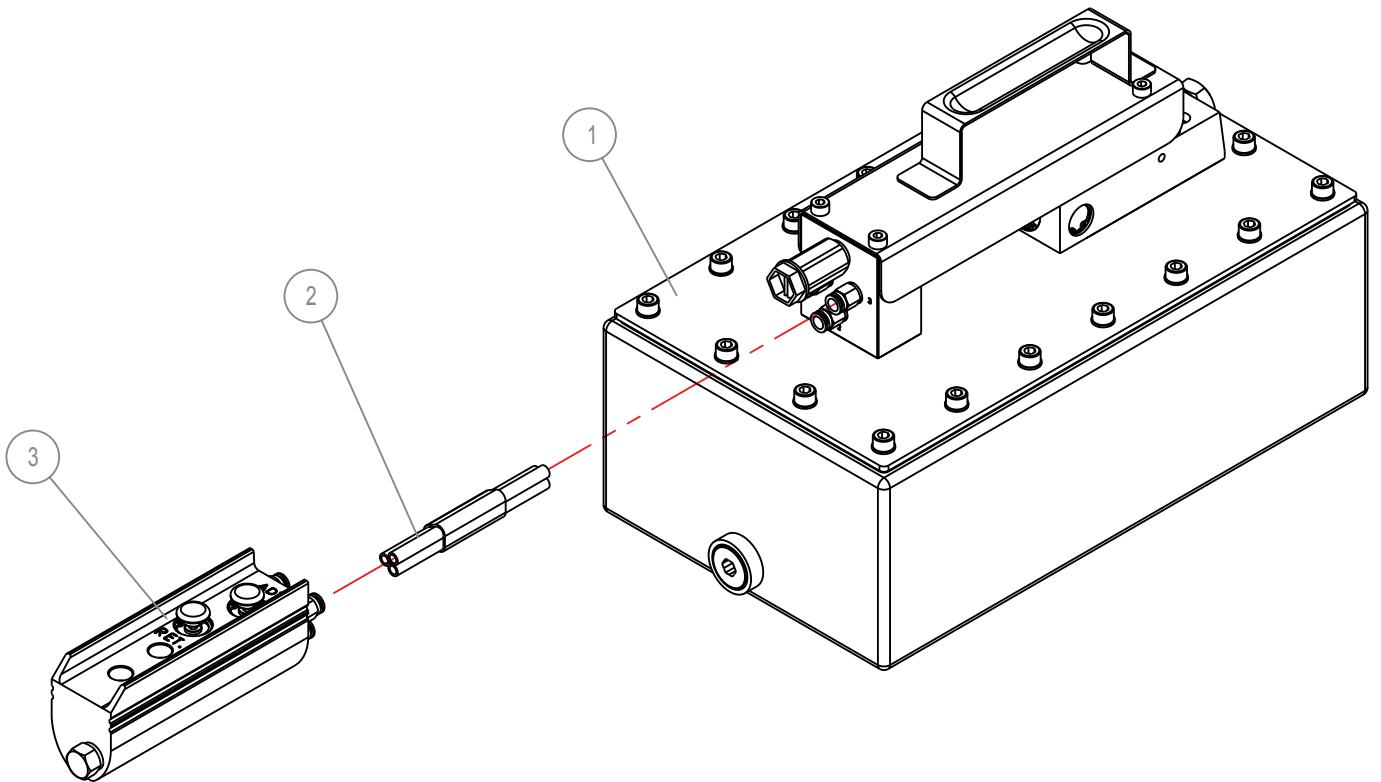
Hydraulic Air Pump

Single Acting / 700 Bar / 3800 cc



PA3801L

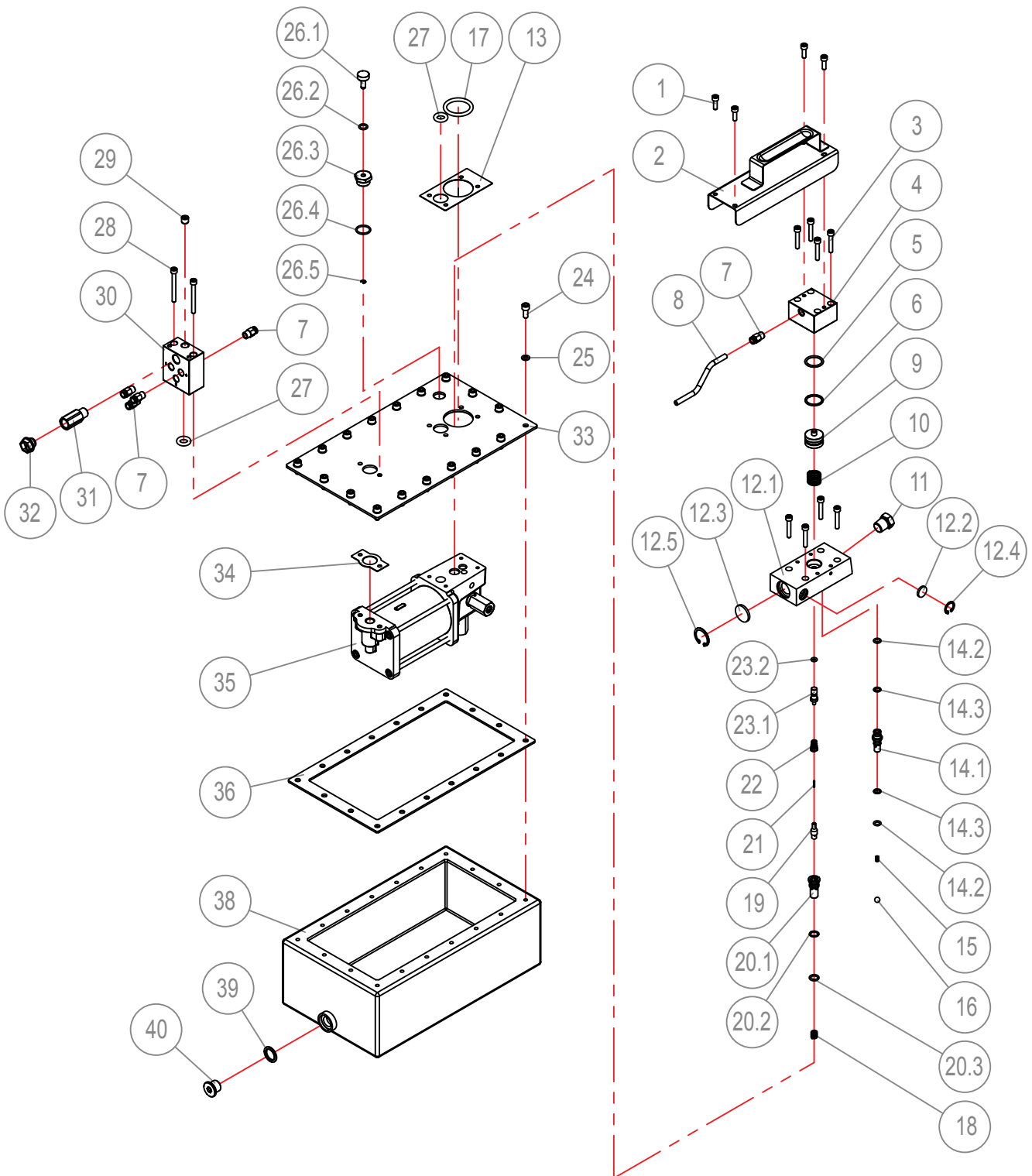
A5714-2102



BOM#	Mfg#	Description	Qty	Repair kit A57-3-9914-100	
1	A57-1-0014-107	Line Control Air Pump	1	1	
2	A57-6-5309-101	Air Tubes	1		
3	A57-3-5002-107	Air Control assy.	1		



# A57-1-0014-107





Hydraulic Air Pump

## Line Control Air Pump for PA3801L

**A57-1-0014-107**

2106

BOM#	Mfg#	Description	Qty	A	B	C	D	E	F	G
1	649-1-0050-055	Screw	4							
2	A57-3-5003-109	Handle	1							
3	649-1-0050-046	Screw	8							
4	A57-6-5301-105	Release Cylinder	1							
5	511-7-0210-104	O-ring	1	1						1
6	573-7-0250-209	Back-up Ring	1	1						1
7	651-7-0063-108	Coupler	5							
8	A57-6-5303-120	Air Tube	1							
9	A57-6-5302-107	Release Piston	1							
10	510-2-0188-102	Compressing Spring	1							
11	D05-6-1001-106	Nut	1							
12	A57-3-4001-100	Oil Outlet Valve Assy.	1							
12.1	A57-5-4001-102	Oil Outlet Valve	1							
12.2	A57-6-3007-105	Muffler	1							
12.3	A17-6-1002-103	Muffler	1							
12.4	666-5-0160-107	C-clip	1							
12.5	666-5-0250-108	C-clip	1							
13	A57-6-1604-103	Pad	1				1			1
14	A57-4-4002-108	Oil Outlet Valve Assy.	1							
14.1	A57-6-4002-201	Oil Outlet Valve	1							
14.2	511-7-0070-104	O-ring	2		2					2
14.3	573-7-0070-207	Back-Up Ring	2		2					2
15	512-2-0043-108	Compressing Spring	1							
16	601-7-0009-001	Steel Ball	1							
17	511-7-0410-102	O-ring	1							1
18	512-2-0061-100	Compressing Spring	1							
19	A57-4-3003-105	Release Valve Assy.	1							
19.1	A57-6-3003-305	Release Valve	1							
19.2	601-7-0003-009	Steel Ball	1							
19.3	503-9-0035-100	Spring Cap	1							
19.4	512-2-0033-105	Compressing Spring	1							
19.5	644-1-0040-204	Screw	1							
20	A57-4-3004-107	Release Valve Assy.	1							

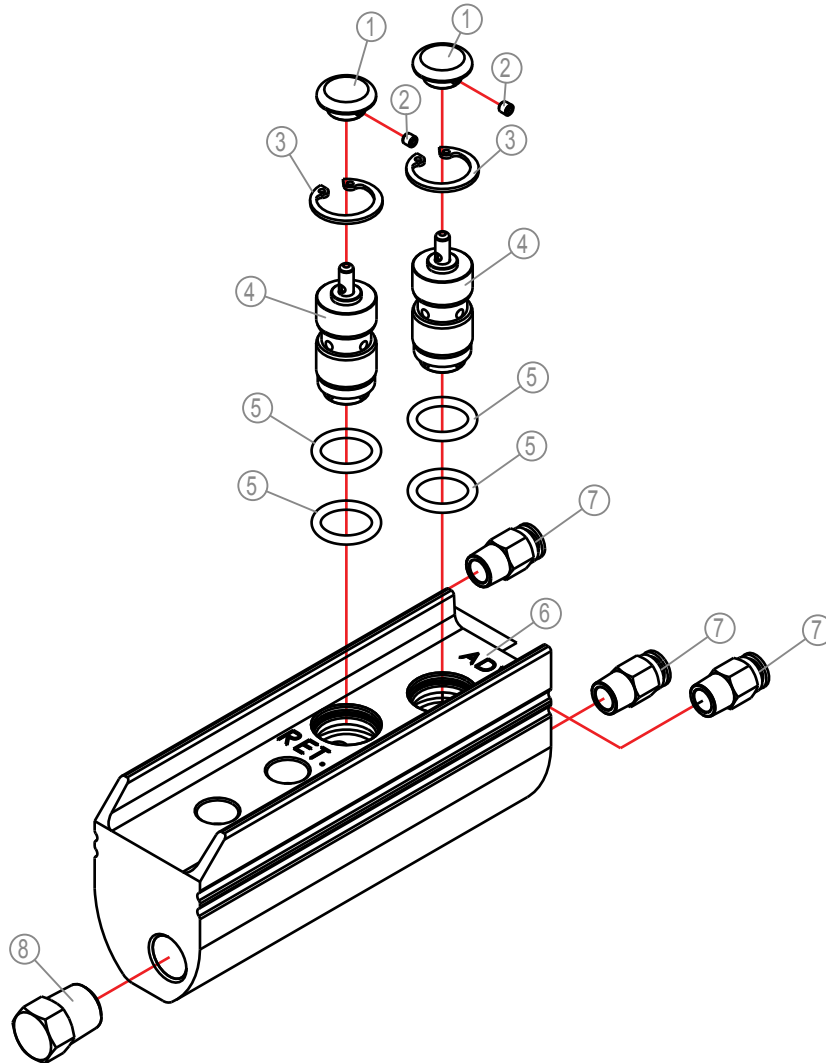






# A57-3-5002-107

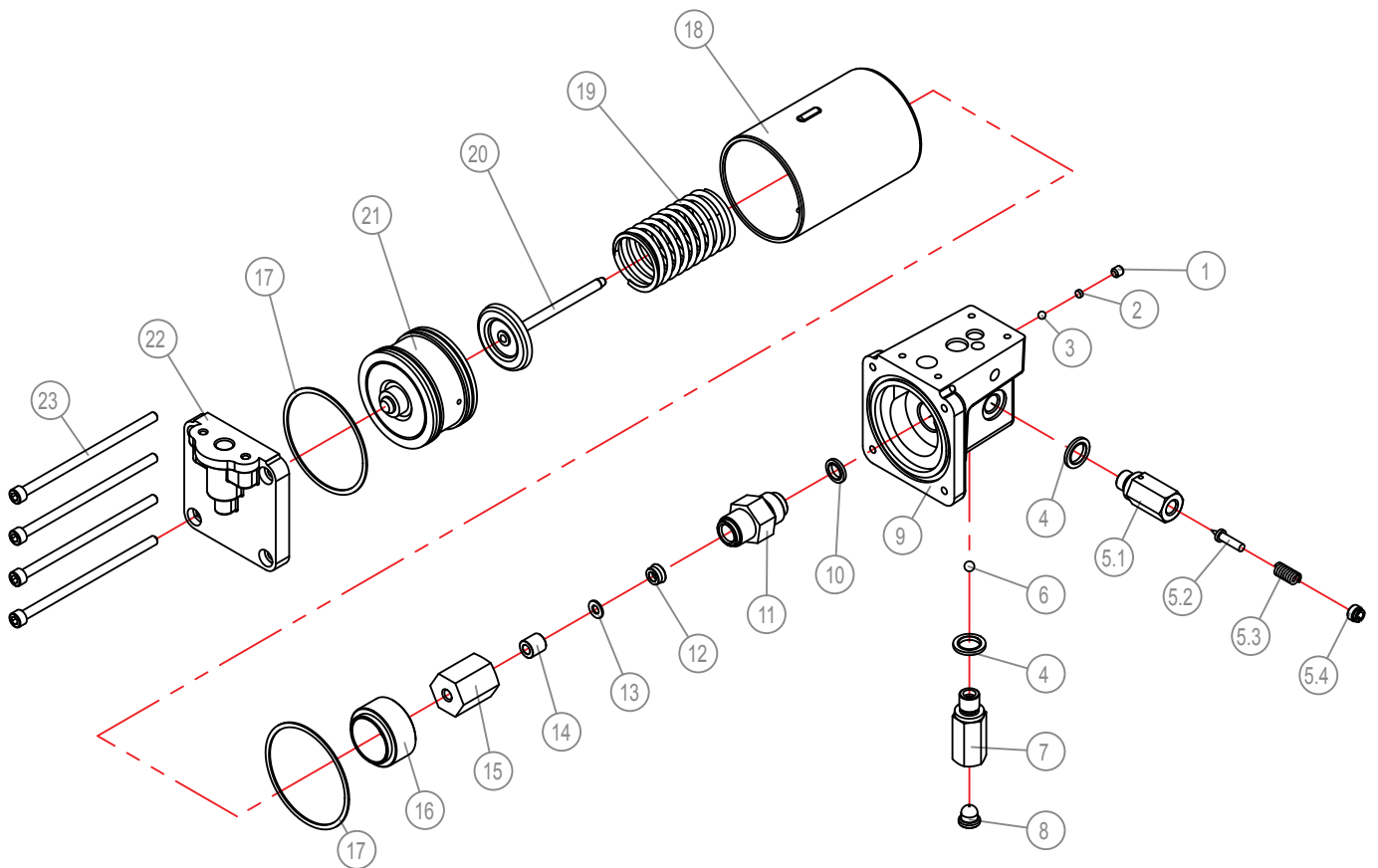
1404



BOM#	Mfg#	Description	Qty		
1	A57-6-5102-109	Buttom	2		
2	644-1-0030-100	Hex Screw	2		
3	666-5-0180-103	C-Clip	2		
4	A57-3-5001-105	Air Valve	2		
5	511-7-0160-105	O-Ring	4		
6	A57-6-5304-101	Housing	1		
7	651-7-0063-108	Hose Fitting	3		
8	H39-5-8104-103	Bolt	1		



# A57-3-0011-103





Hydraulic Air Pump

Air Piston for PA3801L



**A57-3-0011-103**

1701

BOM#	Mfg#	Description	Qty	Repair kit A57-3-9916-104	
1	644-1-0060-05311	Bolt	1		
2	503-9-0050-106	Steel Ball Block	1		
3	601-7-0006-005	Steel Ball	1		
4	532-3-0127-106	Special Washer	2	2	
5	A59-3-1018-106	High Pressure Seat Assy.	1		
5.1	A59-6-1017-102	High Pressure Seat	1		
5.2	A17-6-1216-102	Neddle	1		
5.3	512-2-0067-010	Safety Spring	1		
5.4	A17-5-1603-300	Adjustment Screw	1		
6	601-7-0008-009	Steel Ball	1		
7	A57-6-6006-108	Oil Entrance Valve	1		
8	520-8-0134-101	Oil Filter	1		
9	A57-6-1001-204	Base	1		
10	H18-6-8103-104	Special Washer	1	1	
11	A59-6-1013-105	Pump Cylinder	1		
12	522-7-0120-007	U-cup	1	1	
13	573-7-0120-105	Back-up Ring	1	1	
14	A57-6-2023-108	Bust	1		
15	A57-6-1014-102	Pump Cover	1		
16	A57-6-1016-106	Washer	1		
17	A17-6-2105-108	Cylinder Washer	2	2	
18	A57-6-1003-107	Cylinder	1		
19	512-2-0410-017	Compressing Spring	1		
20	A57-3-1011-108	Piston Assy.	1		
21	A17-4-2100-500	Air Piston Assy.	1		
22	A57-6-1002-105	Cylinder Cover	1		
23	649-1-0060-122	Screw	4		

(GB)

## DECLARATION OF CONFORMITY

According to the EC Machinery Directive, the undersigned, authorized by Shinn Fu Europe B.V., Etten-Leur, the Netherlands, hereby declares under our sole responsibility that the models listed below and its variant, the under types to which this declaration relates, if used and maintained in accordance with the instructions for use and the codes of good practice, comply with the essential health and safety requirements of the EC Machinery Directive.

**For and on behalf of Shinn Fu Europe B.V.**

(D)

## ÜBEREINSTIMMUNGSERKLÄRUNG

Gemäß der EG Maschine Richtlinie, bescheinigt Unterzeichneter, Bevollmächtigter von Shinn Fu Europe B.V., Etten-Leur, Niederlande, hiermit unter unserer exklusiven Verantwortlichkeit, daß der Modelle verzeichneten unten und seine Variante Artikel für welche diese Erklärung gültig ist, vorausgesetzt daß der Richtsatz verwendet und betreut wird nach den Gebrauchsanweisungen, den notwendigen Gesundheits und Sicherheitsvorschriften der EG Maschine Richtlinie entspricht

**Für und im Namen von Shinn Fu Europe B.V.**

(F)

## DÉCLARATION DE CONFORMITÉ

Conformément à la directive CE "Machine", le soussigné, étant mandataire de Shinn Fu Europe B.V., Etten-Leur, Pays-Bas, déclare à la responsabilité exclusive de la firme mentionnée ci-dessus que les modèles ont énuméré ci-dessous et sa variante proches pour lesquels vaut cette déclaration, répondent aux exigences de sécurité et de santé de la directive CE "Machine", à condition qu'ils soient employés et soignés conformément au mode d'emploi.

**Pour et au nom de Shinn Fu Europe B.V.**

(NL)

## VERKLARING VAN OVEREENKOMST

Overeenkomstig de EG machine richtlijn, verklaart ondergetekende, gemachtigde van Shinn Fu Europe B.V., Etten-Leur, Nederland, hierbij onder onze exclusieve verantwoordelijkheid dat de modellen maakten hieronder van een lijst en zijn variant voor welke deze verklaring geldt, mits gebruikt en onderhouden volgens de gebruiksaanwijzing, voldoet aan de noodzakelijke gezondheids en veiligheidseisen van de EG machine richtlijn.

**Voor en namens Shinn Fu Europe B.V.**

(E)

## DECLARACIÓN DE CONFORMIDAD

En acordancia con la Directiva de Máquinaria, el abajo firmante, autorizado por Shinn Fu Europe B.V., Etten-Leur, the Netherlands, aquí y ahora declara bajo su entera responsabilidad que gato los modelos enumerados abajo y su variante, a los cuales esta declaración también hace referencia, si se utiliza y se mantiene en acordancia con las a los instrucciones de uso y los códigos de buenas prácticas, cumplen los requerimientos esenciales de seguridad e higiene de la Directiva anterior.

**Por y en nombre de Shinn Fu Europe B.V.**

(I)

## DICHIARAZIONE DI CONFORMITA'

In accordo con quanto stabilito dalla Norma Europea, il sottoscritto autorizzato dalla Shinn Fu Europe B.V., Etten-Leur, Nederland, dichiara sotto la sua esclusiva responsabilità che il sollevatore idraulico e i modelli hanno elencato qui sotto e la relativa variante, se usati secondo i criteri e le avvertenze riportati nel manuale di uso e manutenzione sono conformi ai requisiti essenziali per la salute e la sicurezza richiesti dalla Direttiva Macchine CE.

**In nome e per conto della Shinn Fu Europe B.V.**

Model / Modell / Modèle  
Model / Modelo / Modello

**PA3801L**



**Machinery Directive 2006/42/EC  
Standard :**

EN1494:2000 + A1:2008



**SHINN FU EUROPE B.V.**

Etten-Leur - The Netherlands  
<http://www.shinnfu.nl>  
e-mail : sales@shinnfu.eu