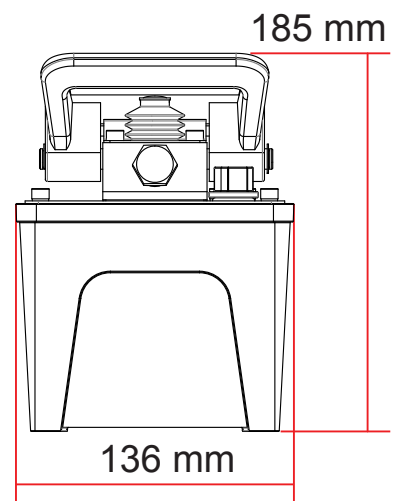
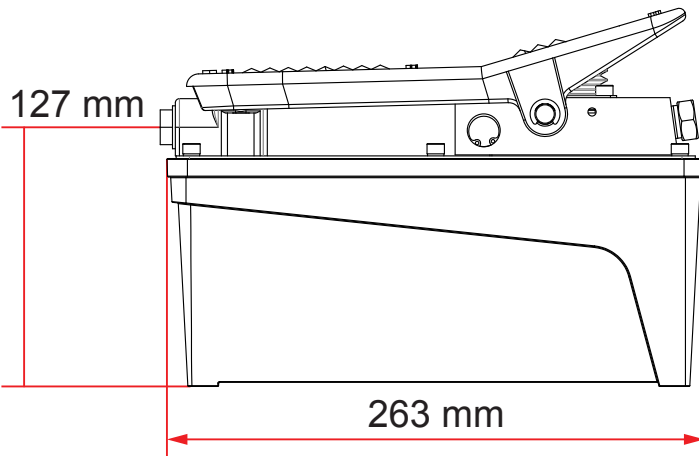
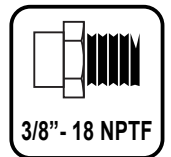
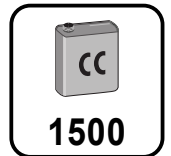
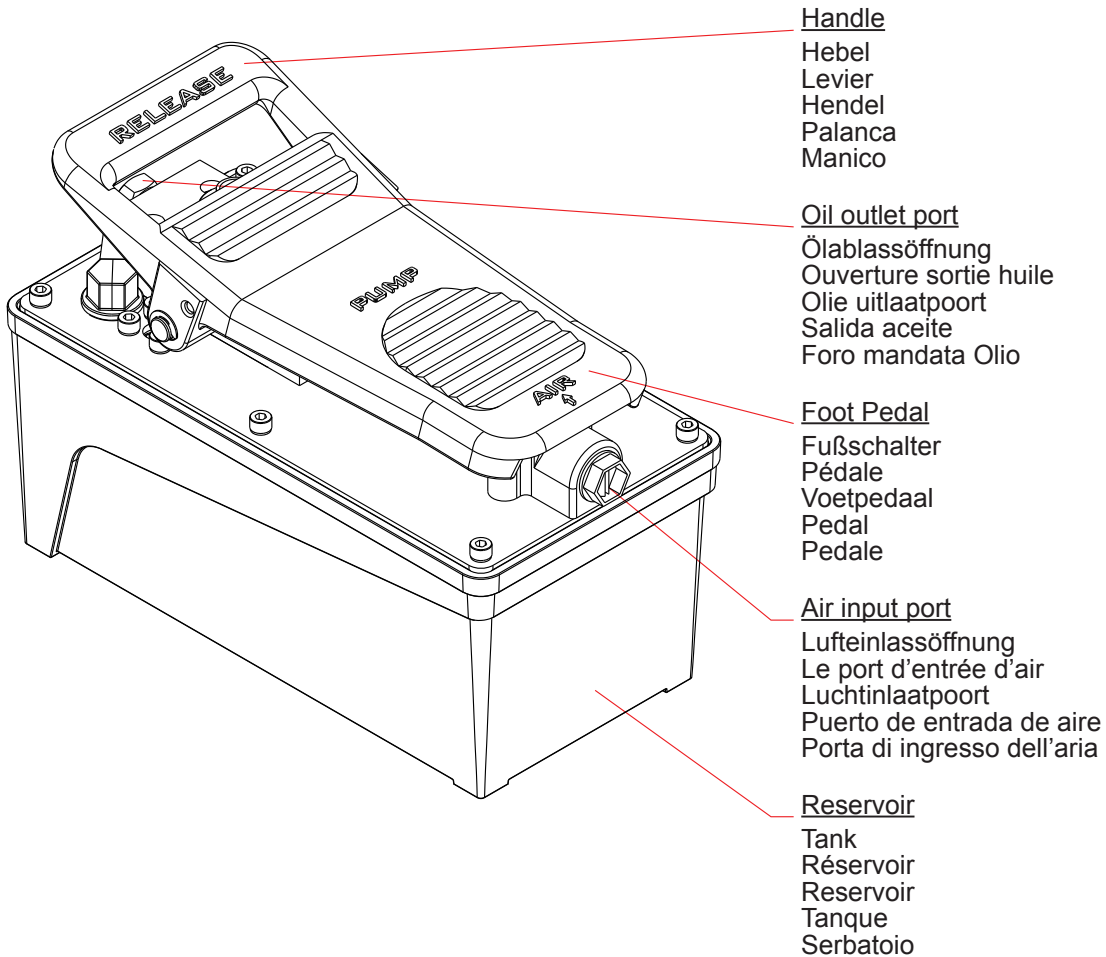




PA1500A

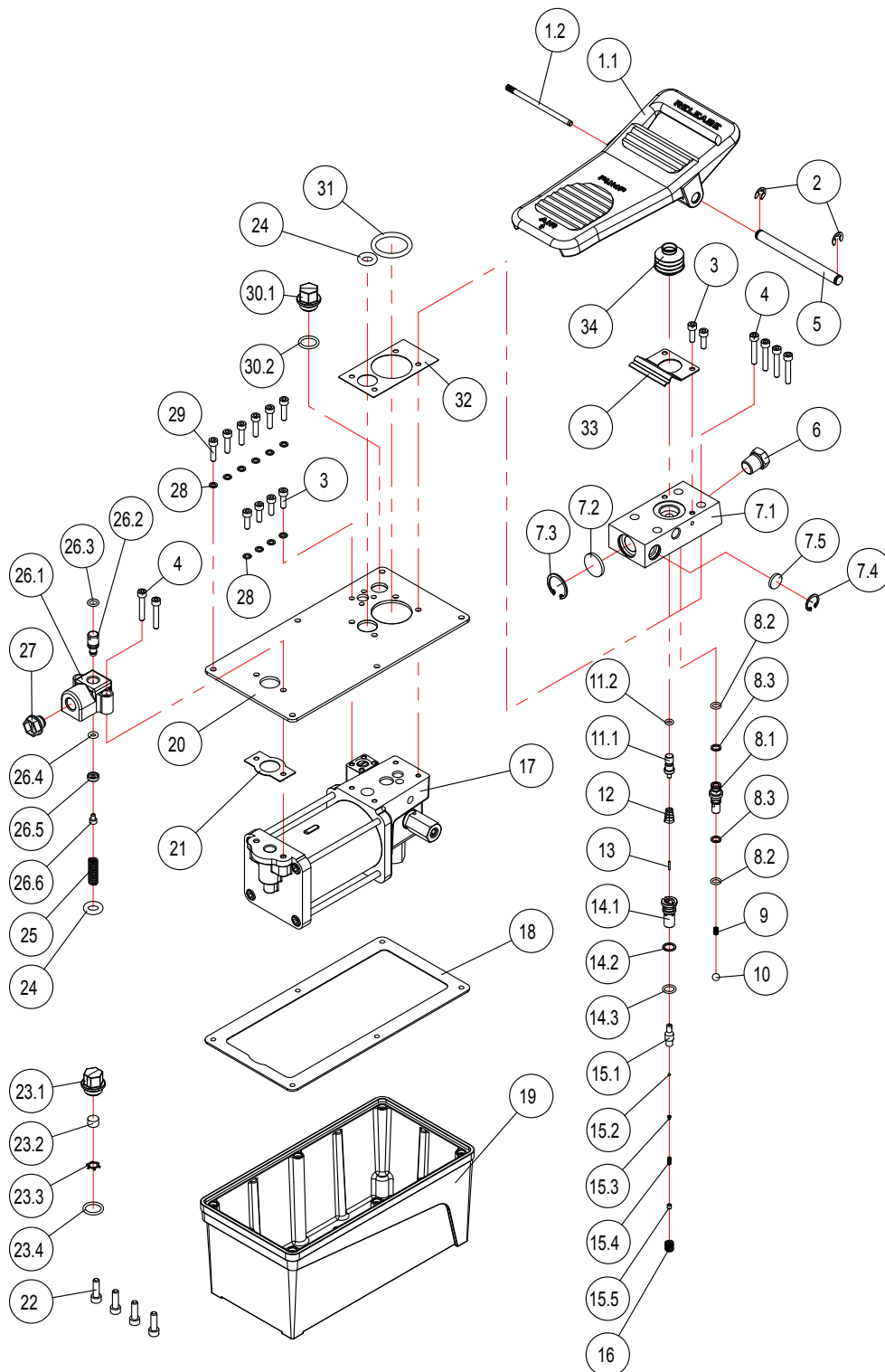
A5732 - 1602





PA1500A

A5732 - 1602





Hydraulic Air Pump

Single Acting / 700 Bar / 1500 cc



PA1500A

A5732 - 1602

BOM#	Mfg#	Description	Qty	BOM#	Mfg#	Description	Qty
1	A57-4-6003-100	Foot pedal assy.	1	26.4	511-7-0053-104	O-ring *f	1
1.1	A57-6-6003-102	Foot pedal	1	26.5	A57-6-5004-109	Air entrance valve cover	1
1.2	A57-6-6001-108	Steel bar	1	26.6	649-1-0040-007	Bolt	1
2	677-5-0070-101	E-clip *a *f	2	27	A17-6-1105-103	Plug	1
3	649-1-0050-055	Screw	6	28	515-3-0051-104	Copper washer *e *f	10
4	649-1-0050-046	Bolt	6	29	649-1-0050-303	Screw	6
5	A57-6-2003-102	Foot pedal axle	1	30	A57-3-5007-107	Plug assy.	1
6	D05-6-1001-106	Oil plug	1	30.1	A57-6-5007-105	Plug	1
7	A57-4-4001-500	Oil outlet base assy.	1	30.2	511-7-0160-408	O-ring	1
7.1	A57-6-6004-104	Oil outlet base	1	31	511-7-0410-102	O-ring	1
7.2	A17-6-1002-103	Silencer	1	32	A57-6-1604-103	Pad *e *f	1
7.3	666-5-0250-108	C-clip	1	33	A57-6-5101-107	Leaf spring	1
7.4	666-5-0160-107	C-clip	1	34	A57-6-6005-106	Dust cap	1
7.5	A57-6-3007-105	Silencer	1				
8	A57-4-4002-108	Oil outlet valve assy.	1				
8.1	A57-6-4002-201	Oil outlet valve	1	*	Repair kit -		
8.2	511-7-0070-104	O-ring *b *f	2	a	A57-3-9930-108	- Foot pedal assy.	
8.3	573-7-0070-207	Back-up ring *b *f	2	b	A57-3-9940-101	- Oil outlet base assy.	
9	512-2-0043-108	Compressing spring	1	c	A57-3-9970-100	- Release base assy.	
10	601-7-0009-001	Steel ball	1	d	A57-3-9962-101	- Air pump assy.	
11	A57-4-3001-101	Release bar assy.	1	e	A57-3-9983-109	- Reservoir assy.	
11.1	A57-6-3001-112	Release bar	1	f	A57-3-9932-102	- Standard	
11.2	511-7-0050-300	O-ring *c *f	1				
12	552-2-0010-105	Bevel compressing spring *c	1				
13	A57-6-3002-206	Release neddle *c *f	1				
14	A57-4-3004-107	Release base assy.	1				
14.1	A57-6-3006-307	Release base	1				
14.2	573-7-0130-209	Back-up ring *c *f	1				
14.3	511-7-0100-309	O-ring *c *f	1				
15	A57-4-3003-105	Release valve assy.	1				
15.1	A57-6-3003-305	Release valve	1				
15.2	601-7-0003-009	Steel ball	1				
15.3	503-9-0035-100	Steel ball block	1				
15.4	512-2-0033-105	Compressing spring	1				
15.5	644-1-0040-204	Screw	1				
16	512-2-0061-100	Compressing spring	1				
17	A57-3-1032-106	Air pump assy. *d *f	1				
18	A57-6-1602-109	Pad *e *f	1				
19	A57-6-1601-107	Reservoir	1				
20	A57-6-6013-105	Reservoir cover	1				
21	A57-6-1605-105	Pad *f	1				
22	649-1-0060-020	Bolt	4				
23	A57-3-1900-109	Air vent valve	1				
23.1	A57-6-5009-109	Cover	1				
23.2	A57-6-5008-107	Filter core	1				
23.3	608-3-0014-100	Circular internal nuts	1				
23.4	511-7-0160-408	O-ring	1				
24	511-7-0140-200	O-ring	2				
25	512-2-0092-101	Compressing spring	1				
26	A57-4-5001-101	Air entrance valve seat assy.	1				
26.1	A57-6-5001-103	Air entrance valve seat	1				
26.2	A57-6-5003-107	Air entrance valve	1				
26.3	511-7-0080-309	O-ring *f	1				

(GB)

DECLARATION OF CONFORMITY

According to the EC Machinery Directive, the undersigned, authorized by Shinn Fu Europe B.V., Etten-Leur, the Netherlands, hereby declares under our sole responsibility that the models listed below and its variant, the under types to which this declaration relates, if used and maintained in accordance with the instructions for use and the codes of good practice, comply with the essential health and safety requirements of the EC Machinery Directive.

For and on behalf of Shinn Fu Europe B.V.

(D)

ÜBEREINSTIMMUNGSERKLÄRUNG

Gemäß der EG Maschine Richtlinie, bescheinigt Unterzeichneter, Bevollmächtigter von Shinn Fu Europe B.V., Etten-Leur, Niederlande, hiermit unter unserer exklusiven Verantwortlichkeit, daß der Modelle verzeichneten unten und seine Variante Artikel für welche diese Erklärung gültig ist, vorausgesetzt daß der Richtsatz verwendet und betreut wird nach den Gebrauchsanweisungen, den notwendigen Gesundheits und Sicherheitsvorschriften der EG Maschine Richtlinie entspricht

Für und im Namen von Shinn Fu Europe B.V.

(F)

DÉCLARATION DE CONFORMITÉ

Conformément à la directive CE "Machine", le soussigné, étant mandataire de Shinn Fu Europe B.V., Etten-Leur, Pays-Bas, déclare à la responsabilité exclusive de la firme mentionnée ci-dessus que les modèles ont énuméré ci-dessous et sa variante proches pour lesquels vaut cette déclaration, répondent aux exigences de sécurité et de santé de la directive CE "Machine", à condition qu'ils soient employés et soignés conformément au mode d'emploi.

Pour et au nom de Shinn Fu Europe B.V.

(NL)

VERKLARING VAN OVEREENKOMST

Overeenkomstig de EG machine richtlijn, verklaart ondergetekende, gemachtigde van Shinn Fu Europe B.V., Etten-Leur, Nederland, hierbij onder onze exclusieve verantwoordelijkheid dat de modellen maakten hieronder van een lijst en zijn variant voor welke deze verklaring geldt, mits gebruikt en onderhouden volgens de gebruiksaanwijzing, voldoet aan de noodzakelijke gezondheids en veiligheidseisen van de EG machine richtlijn.

Voor en namens Shinn Fu Europe B.V.

(E)

DECLARACIÓN DE CONFORMIDAD

En acordancia con la Directiva de Máquinaria, el abajo firmante, autorizado por Shinn Fu Europe B.V., Etten-Leur, the Netherlands, aquí y ahora declara bajo su entera responsabilidad que gato los modelos enumerados abajo y su variante, a los cuales esta declaración también hace referencia, si se utiliza y se mantiene en acordancia con las a los instrucciones de uso y los códigos de buenas prácticas, cumplen los requerimientos esenciales de seguridad e higiene de la Directiva anterior.

Por y en nombre de Shinn Fu Europe B.V.

(I)

DICHIARAZIONE DI CONFORMITA'

In accordo con quanto stabilito dalla Norma Europea, il sottoscritto autorizzato dalla Shinn Fu Europe B.V., Etten-Leur, Nederland, dichiara sotto la sua esclusiva responsabilità che il sollevatore idraulico e i modelli hanno elencato qui sotto e la relativa variante, se usati secondo i criteri e le avvertenze riportati nel manuale di uso e manutenzione sono conformi ai requisiti essenziali per la salute e la sicurezza richiesti dalla Direttiva Macchine CE.

In nome e per conto della Shinn Fu Europe B.V.

Model / Modell / Modèle
Model / Modelo / Modello

PA1500A



**Machinery Directive 2006/42/EC
Standard :**

EN1494:2000 + A1:2008



SHINN FU EUROPE B.V.

Etten-Leur - The Netherlands
<http://www.shinnfu.nl>
e-mail : sales@shinnfu.eu